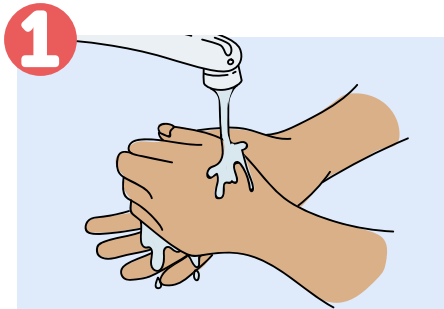


# DHËL YE KOC LAAK WÄL AKUÖÖK

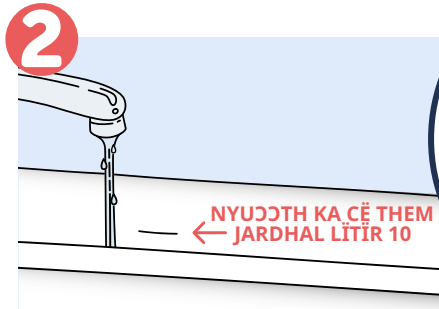
Wäl akuöök (Bleach baths) ee kãm abëk nõk raan guöp keya ka tëtök tãu raan guöp a ce luöök. Wäl akuöök a ye mĩth ku kãccdit lãk bẽ akuöök tek yic.

## Kã ba wíc aa kík:

- Agan laak
- Piu – duk keek cõl tuc bĩk 30°C waan
- Jardhal jõt litir 10 dhie ye koc luui baai
- Wäl è laak cĩn yic riëya (White King) – mL12 tẽn litir 10 è piu
- Miök laak – thiõnj bĩny/biĩnj 1-2 tẽn laak cẽ lueel
- Wãrkuañ ya mĩlo – thiõnj bĩny 1/3 tẽn litir 10 è piu tẽ cĩ ye lueel

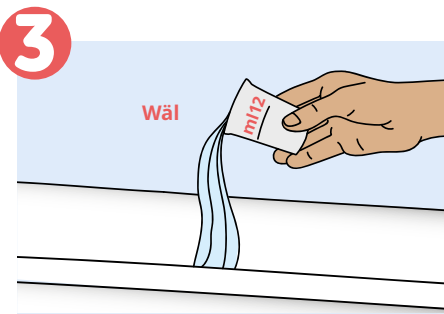


Kaam kęc yĩn gua gõc, lãk ku wec yic cin.



Thiõnj agey piu bẽ yet nyin wíc ka ye gem thin jardhal jõt litir 10 rin ba piu ca tãau thin ñiec them.

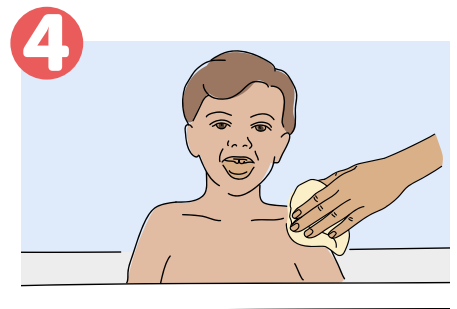
**NYUUTH**  
Tekdã ka yĩn a bẽ mëer è piu giit nẽ galam ce cuwth ya warañ la nuet rin ba cĩ ye rëer yĩ them abak.



Mat mL12 è wäl thin kuat tẽn litir 10 è jardhal piu cẽ luöõnj agey yic (na cẽ agey thiãnj bĩ kãcc machhok ebẽn laak, ka yĩ met 1/4 è bĩny wäl thin). Tẽ cĩ ye lueel ka yĩ met mĩlo ku miök laak thin.



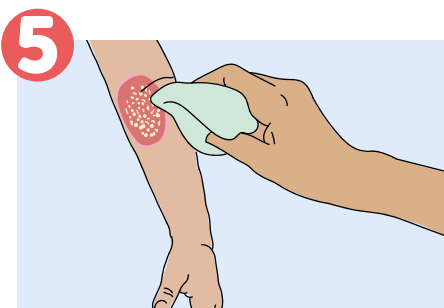
Thiõnj bĩny 1/3 mĩlo tẽn kuat jardhal leñ yic litir 10 ca puök piu laak yic.



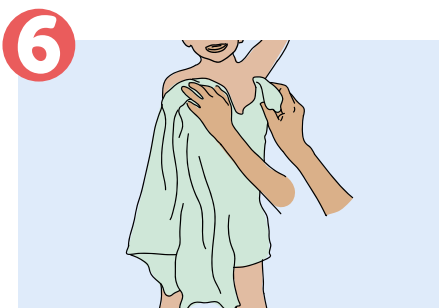
Lãk manh du piu yiic ku lãk nyin ku lãk nhom, ku duk piu cõl la ye nyin.



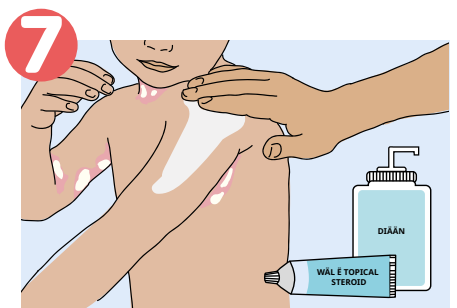
Mat biëny/biĩnj 1-2 è miök laak thin.



Na cẽ akuöök yiic pãt ku kõökkã manh du guöp, ka yĩ lãk yãntõök yiic amããth rin ba gõk kuëk bei.



Na ca manh du lãk, ka jõt bei piu è wäl yiic – ku duk ben lãk kõu piu path kõk tẽ cĩ yen thõk thõk laak agey yic. Wíc backir bin manh du weec guöp amããth.



Tac wäl akuöök (topical steroids) ku diããn tẽ cit tẽ cĩ Akim ya kuonyakim luël yeen.